



# SECURITY

ACCESS PANELS (SAP)



**Trafalgar has the most extensive range of access panels available:**

Small Sizes | Large Sizes | Custom Sizes  
Tileable | Security | Acoustic | Fire Rated  
Stainless Steel | Upward Opening | MDF  
Touch Latch | Customwood | Service Shaft

[taccess.com.au](http://taccess.com.au)

26112019

# SECURITY

Access Panels (SAP)

## Product Overview

**Trafalgar Security Access Panels** are manufactured in Australia and have been designed for use where there is a need to provide security as well as access. They are constructed using a steel panel door and steel frame. Trafalgar also offer a perforated panel which is designed to allow airflow and is perfect for ventilation access points. Trafalgar SAP panels feature a piano hinge and a key lock as standard for lockable accessibility.



Designed for use in:-

Detention Centres  
Correctional Centres  
Hospitals

These panels have been designed and approved for use in various high security applications such as Detention Centres, Correctional Centres and Hospitals.

Trafalgar Security Access Panels allow for an aesthetically pleasing means of providing access into walls and ceilings. When installed they sit flush with the surface leaving a neat opening around the perimeter.

Access panels are typically installed during construction, but they can also be retro-fitted when additional access is required.

**Trafalgar specialise in manufacturing large custom size access panels** with varying hinge and lock options to meet architectural specifications.

# SECURITY

Access Panels (SAP)

# Technical Specifications

## PRODUCT DESCRIPTION

**Door Panel** Pre-primed steel.  
Front and back 1.6mm zincanneal steel.  
Perforated for ventilation – optional.

**Frame** 1.6mm zincanneal steel with stainless steel striker plate.  
Lock box cover for frame door and panel – optional.

**Frame Depth** 100mm

**Cut-Out Size** Cut out a hole in the ceiling, wall or service shaft the same size as the access panel. For example, a 450x450 access panel will have a 450x450 cut out.

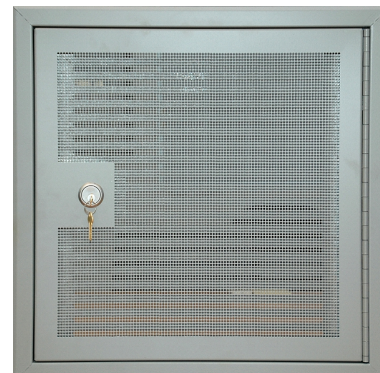
**Frame Types** Flanged Edge (FE) or Wet Wall (WW)

**Hinge** Piano hinge.

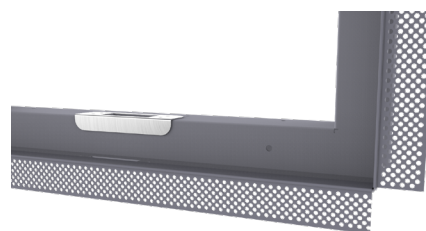
**Lock** Kaba nightlatch (or as specified).

**Security Features** Anti-ligature.  
Anti-tampering.

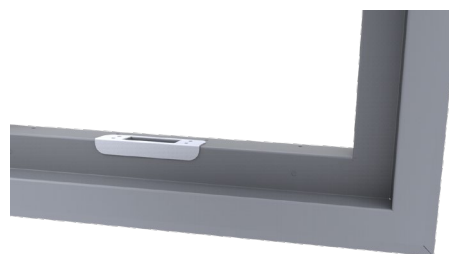
**Also Available** Trafalgar can custom manufacture to meet your specifications.  
Trafalgar also supply a comprehensive range of fire rated, metal, acoustic, customwood and speciality access panels.



OPTIONAL: Perforated for natural ventilation



**Wet Wall Frame**  
(Set bead for plastering in)



**Flanged Edge Frame**  
(Architrave / picture frame)

# SECURITY

Access Panels (SAP)

## Ordering Information



### SAP PANELS

- Australian made - superior quality.
- Trafalgar specialise in custom sizes.
- Provides security as well as access.

#### SECURITY ACCESS PANELS

Code	Size (mm)	Frame	Specifications
<b><u>STANDARD SIZES</u></b>			
SAP-300-FE	300 x 300		
SAP-400-FE	400 x 400		
SAP-450-FE	450 x 450		
SAP-550-FE	550 x 550		
SAP-600-FE	600 x 600		
SAP-6040-FE	600 x 400		
<b><u>CUSTOM SIZES</u></b>			
SAP-Custom-FE	Custom sizes available.		
<b><u>STANDARD SIZES</u></b>			
SAP-300-WW	300 x 300		
SAP-400-WW	400 x 400		
SAP-450-WW	450 x 450		
SAP-550-WW	550 x 550		
SAP-600-WW	600 x 600		
SAP-6040-WW	600 x 400		
<b><u>CUSTOM SIZES</u></b>			
SAP-Custom-WW	Custom sizes available.		

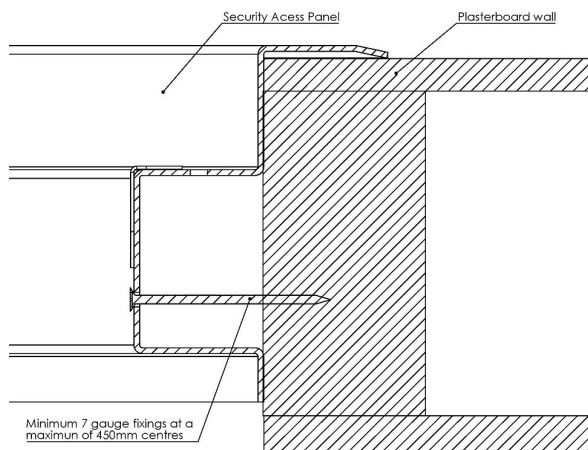
Trafalgar Security Access Panels must be installed into ceilings and walls in positions indicated on the architectural drawings and in accordance with Trafalgar's installation instructions.

# SECURITY

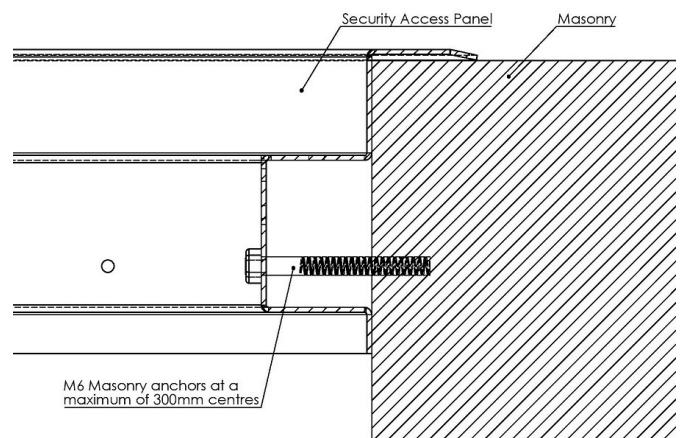
Access Panels (SAP)

# Installation Instructions

## SAP - Plasterboard Install



## SAP - Masonry Install



## Installation Instructions

1. Mark out and cut an opening in the ceiling or wall to suit the dimensions of the access panel (eg. 450 x 450), taking into account the position of existing joists.
2. With the hatch of the access panel open, insert the panel into position and fix through the fixing holes in the frame into the surrounding framework, with fixings as detailed in the drawings above.



Trafalgar has developed a range of **installation videos** to assist our customers. To view these step by step install videos please go to **[www.youtube.com](https://www.youtube.com)** and search for **Trafalgar TV**. Subscribe and you will be notified when new videos are uploaded.

Trafalgar reserves the right to change specifications without notice. Please check with your supplier at the time of order. The information contained in this brochure was correct at the time of print. E&OE. Published 26.11.2019